

WARNINGS



DISPLAY MODE



Time	12:00	Course	030°	Speed	15 k
Drift dir	170°	EBL	075°	Range	6 nm
Drift spd	1.2 k	VRM	2.5 nm	Rings	2 nm

Used together with the rollerbal to increase or decrease the required value for manual speed input to the radar.

Usata insieme al tasto rotante serve per inserire e variare la velocità immessa manualmente

RADAR CONTROL



EBL Control



VRM Control

WARNINGS

Power Antenna Radar

DISPLAY MODE

Course Up Head Up North Up

True Motion Relative Motion

Range + Range -

Aftergl. + Aftergl. -

Set Center HL Supress Reset Centre

Time	12:00	Course	030°	Speed	15 k
Drift dir	170°	EBL	075°	Range	6 nm
Drift spd	1.2 k	VRM	2.5 nm	Rings	2 nm

Used together with the rollerball to specify estimated drift direction.

Usata insieme al tasto rotante serve ad inserire la direzione della deriva stimata.

RADAR CONTROL

Radar On/Off Radar St. by Scanner On/Off

Brill. + Gain + Tuning +

Brill. - Gain - Tuning -

Focus + Anticlutt Sea + Anticlutt Rain +

Focus - Anticlutt Sea - Anticlutt Rain -

Range Rings + EBL + VRM +

Range Rings - EBL - VRM -

Gyro On/Off Log On/Off Man. Speed Man. Drift Dir Man. Drift Spd

Panel Illum. Cursor Brill. A/N Brill. Fixed rings on/off Bearing Scale

EBL Control

VRM Control

WARNINGS



DISPLAY MODE



Time	12:00	Course	030°	Speed	15 k
Drift dir	170°	EBL	075°	Range	6 nm
Drift spd	1.2 k	VRM	2.5 nm	Rings	2 nm

Used together with the rollerball to specify estimated drift magnitude.

Usata insieme al tasto rotante serve ad inserire la velocità stimata della deriva

RADAR CONTROL



EBL Control



VRM Control

WARNINGS

Pointer Antenna Radar

DISPLAY MODE

Course Up Head Up North Up

True Motion Relative Motion

Range + Range -

Aftergl. + Aftergl. -

Set Center HL Suppress Reset Centre

Time	12:00	Course	030°	Speed	15 k
Drift dir	170°	EBL	075°	Range	6 nm
Drift spd	1.2 k	VRM	2.5 nm	Rings	2 nm

Used together with the rollerball to regulate the background illumination of the push buttons.

Illumination of the push buttons should be kept as low as possible at all times as excessive illumination may destroy the contrast on the radar picture, create annoying reflections and destroy night vision.

Usata insieme al tasto rotante serve a regolare l'illuminazione dei tasti. L'illuminazione dei tasti deve essere tenuta sempre al minimo perché potrebbe annullare il contrasto della rappresentazione e creare fastidiosi riverberi che annullano la rappresentazione notturna.

RADAR CONTROL

Radar On/Off Radar St. by Scanner On/Off

Brill. + Gain + Tuning +

Brill. - Gain - Tuning -

Focus + Anticlut Sea + Anticlut Rain +

Focus - Anticlut Sea - Anticlut Rain -

Range Rings + EBL + VRM +

Range Rings - EBL - VRM -

Gyro On/Off Log On/Off Man. Speed Man. Drift Dir Man. Drift Spd
Panel Illum. Cursor Brill. A/N Brill. Fixed rings on/off Bearing Scale

EBL Control

VRM Control

WARNINGS



DISPLAY MODE



Time	12:00	Course	030°	Speed	15 k
Drift dir	170°	EBL	075°	Range	6 nm
Drift spd	1.2 k	VRM	2.5 nm	Rings	2 nm

Used together with the rollerball to regulate the illumination of the cursor on the display.

Usata insieme al tasto rotante serve a regolare la luminosità del cursore.



RADAR CONTROL



EBL Control



VRM Control

WARNINGS



DISPLAY MODE



	Time	12:00	Course	030°	Speed	15 k
	Drift dir	170°	EBL	075°	Range	6 nm
	Drift spd	1.2 k	VRM	2.5 nm	Rings	2 nm

Used together with the rollerball to regulate the illumination of the AN displayed data.

Usato insieme al tasto rotante serve per l'illuminazione dei dati AN

RADAR CONTROL



EBL Control



VRM Control

WARNINGS

Power Antenna Radar

DISPLAY MODE

Course Up Head Up North Up

True Motion Relative Motion

Range + Range -

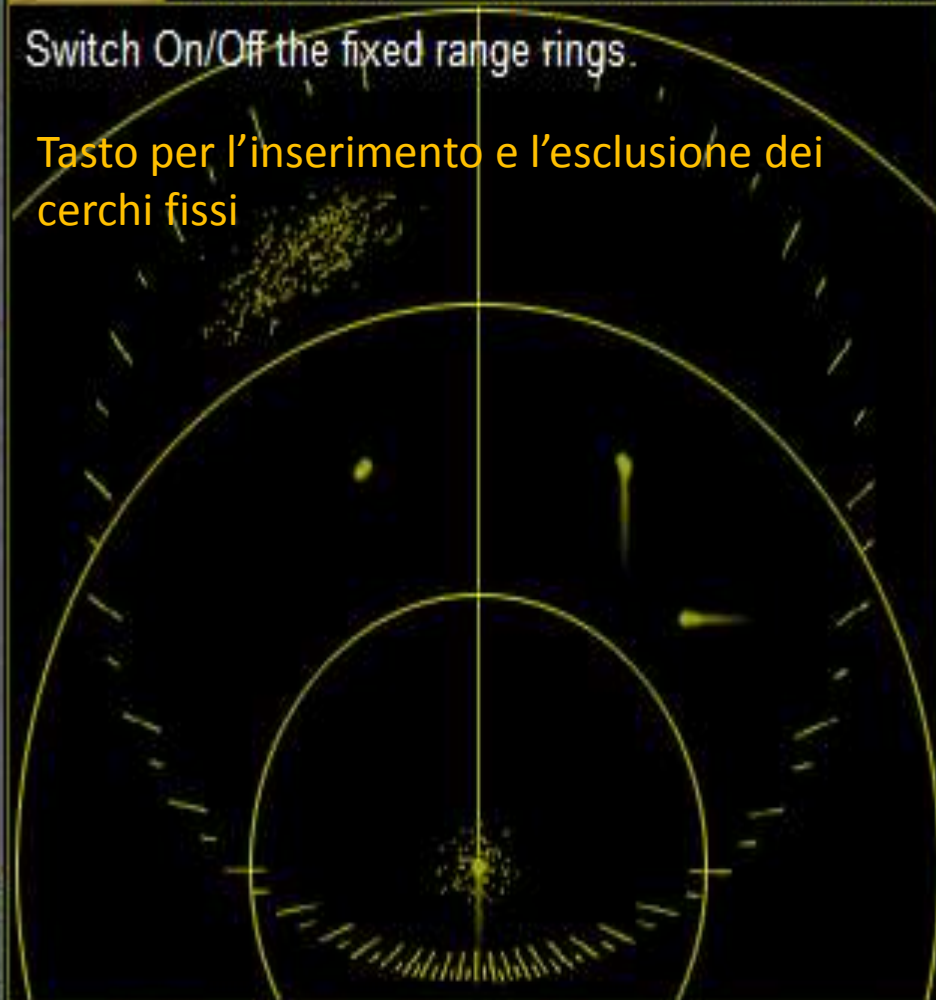
Aftergl. + Aftergl. -

Set Center HL Suppress Reset Centre

Time	12:00	Course	030°	Speed	15 k
Drift dir	170°	EBL	075°	Range	6 nm
Drift spd	1.2 k	VRM	2.5 nm	Rings	2 nm

Switch On/Off the fixed range rings.

Tasto per l'inserimento e l'esclusione dei cerchi fissi



RADAR CONTROL

Radar On/Off Radar St. by Scanner On/Off

Brill. + Gain + Tuning +

Brill. - Gain - Tuning -

Focus + Anticlutt Sea + Anticlutt Rain +

Focus - Anticlutt Sea - Anticlutt Rain -

Range Rings + EBL + VRM +

Range Rings - EBL - VRM -

Gyro On/Off Log On/Off Man. Speed Man. Drift Dir Man. Drift Spd

Panel Illum. Cursor Brill. A/N Brill. Fixed rings on/off Bearing Scale

EBL Control

VRM Control

WARNINGS

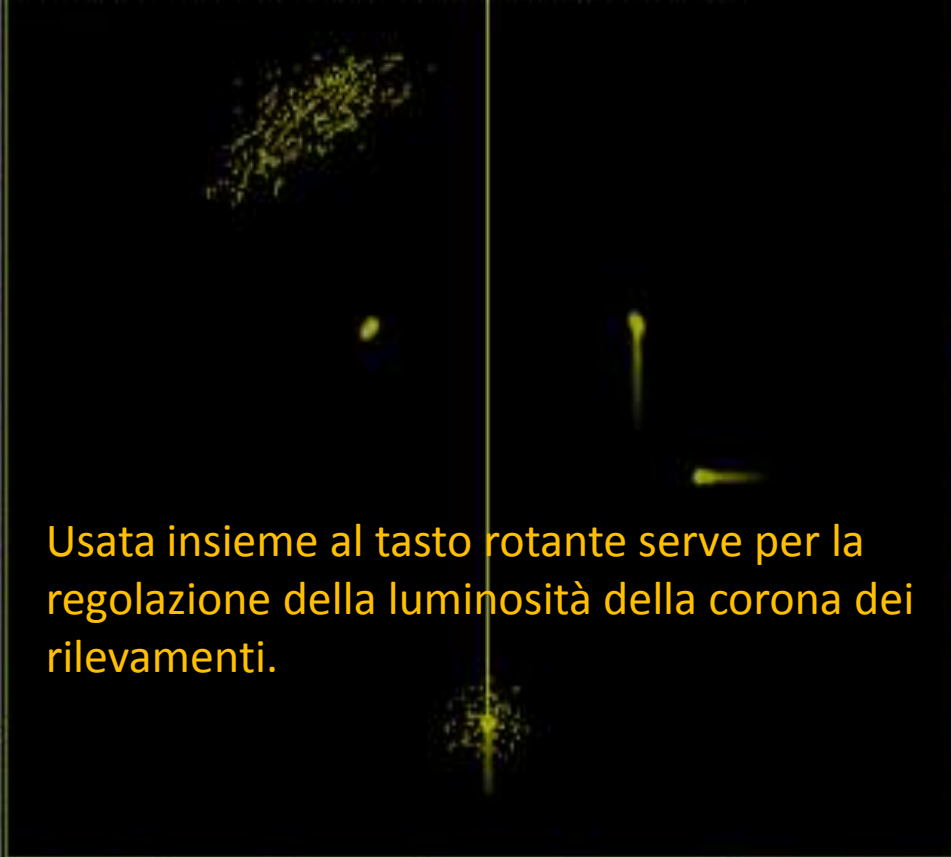


DISPLAY MODE



Time	12:00	Course	030°	Speed	15 k
Drift dir	170°	EBL	075°	Range	6 nm
Drift spd	1.2 k	VRM	2.5 nm	Rings	2 nm

Used together with the rollerball to adjust the intensity of the electronic bearing scale.



Usata insieme al tasto rotante serve per la regolazione della luminosità della corona dei rilevamenti.

RADAR CONTROL



EBL Control



VRM Control

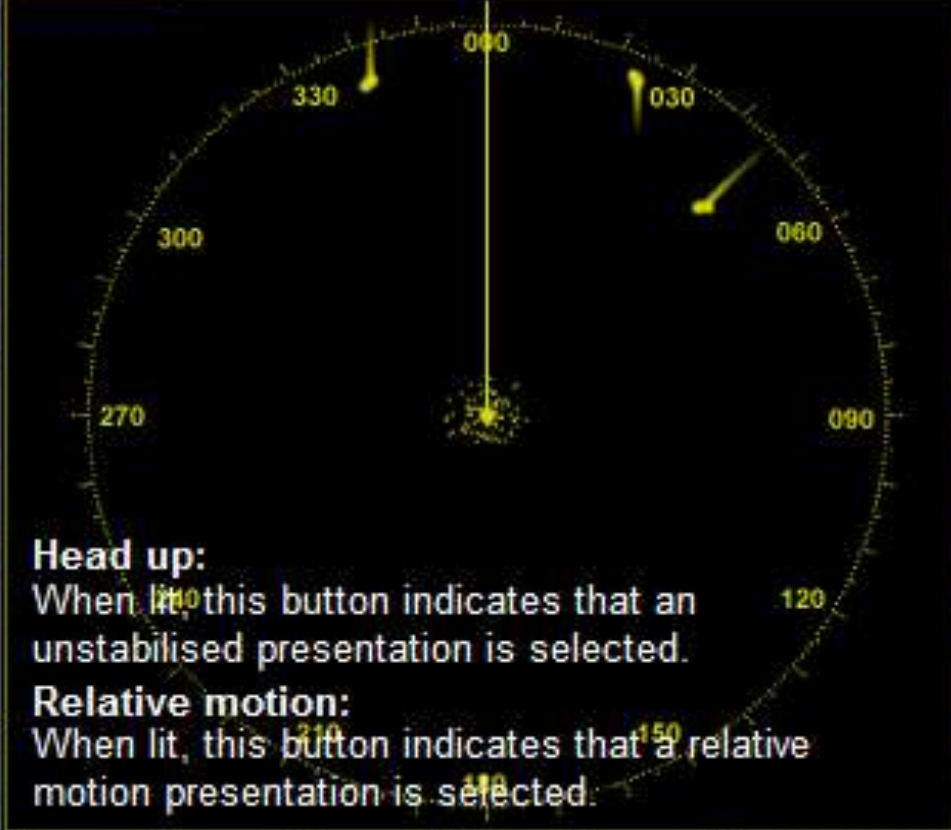
WARNINGS



DISPLAY MODE



Time 12:00 Course 030° Speed 15 k
Drift dir 170° EBL 075° Range 6 nm
Drift spd 1.2 k VRM 2.5 nm Rings 2 nm



Head up:
When lit, this button indicates that an unstabilised presentation is selected.

Relative motion:
When lit, this button indicates that a relative motion presentation is selected.

RADAR CONTROL



Head up – Quando si illumina questo tasto indica la selezione di una rappresentazione instabile.
Relative motion – quando si illumina questo tasto significa che è funzionante una rappresentazione relativa del moto.

WARNINGS

Power Antenna Radar

DISPLAY MODE

Course Up Head Up North Up

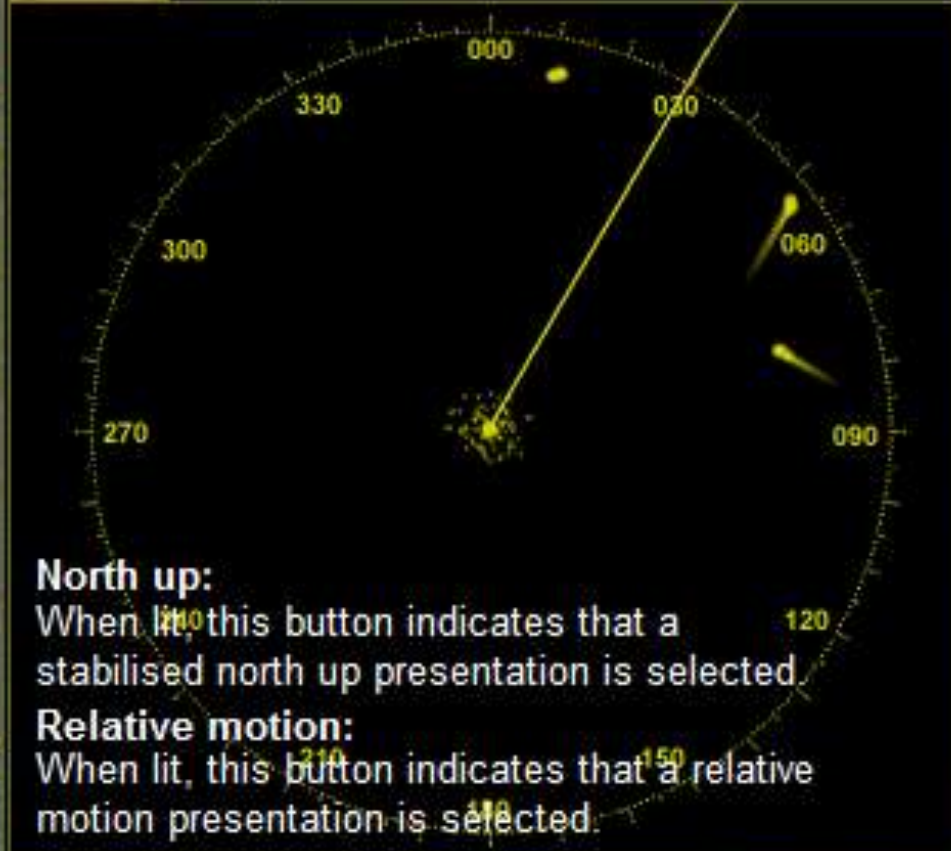
True Motion Relative Motion

Range + Range -

Aftergl. + Aftergl. -

Set Center HL Supress Reset Centre

Time 12:00 Course 030° Speed 15 k
Drift dir 170° EBL 075° Range 6 nm
Drift spd 1.2 k VRM 2.5 nm Rings 2 nm



North up:
When lit, this button indicates that a stabilised north up presentation is selected

Relative motion:
When lit, this button indicates that a relative motion presentation is selected.

RADAR CONTROL

Radar On/Off Radar St. by Scanner On/Off
Brill. + Gain + Tuning +
Brill. - Gain - Tuning -
Focus + Anticlutt Sea + Anticlutt Rain +
Focus - Anticlutt Sea - Anticlutt Rain -
Range Rings + EBL + VRM +
Range Rings - EBL - VRM -

Gyro On/Off Log On/Off Man. Speed Man. Drift Dir Man. Drift Spd
Panel Illum. Cursor Brill. A/N Brill. Fixed rings on/off Bearing Scale

EBL Control

VRM Control

North Up – quando s’illumina questo tasto significa che la rappresentazione è ancorata al Nord.
Relative motion – quando si illumina questo tasto significa che è funzionante una rappresentazione relativa del moto.